

RI.
SE

LASH FIRE

Workable fire safety

Human-centered design for onboard fire safety installations

Staffan Bram, RISE Research Institutes of Sweden



WORKABLE?

```
graph TD; A[WORKABLE?] -.- B[Does the job  
Functional, effective, fit for purpose]; A -.- C[Makes the job doable  
Supports crew activities in fire prevention & response]
```

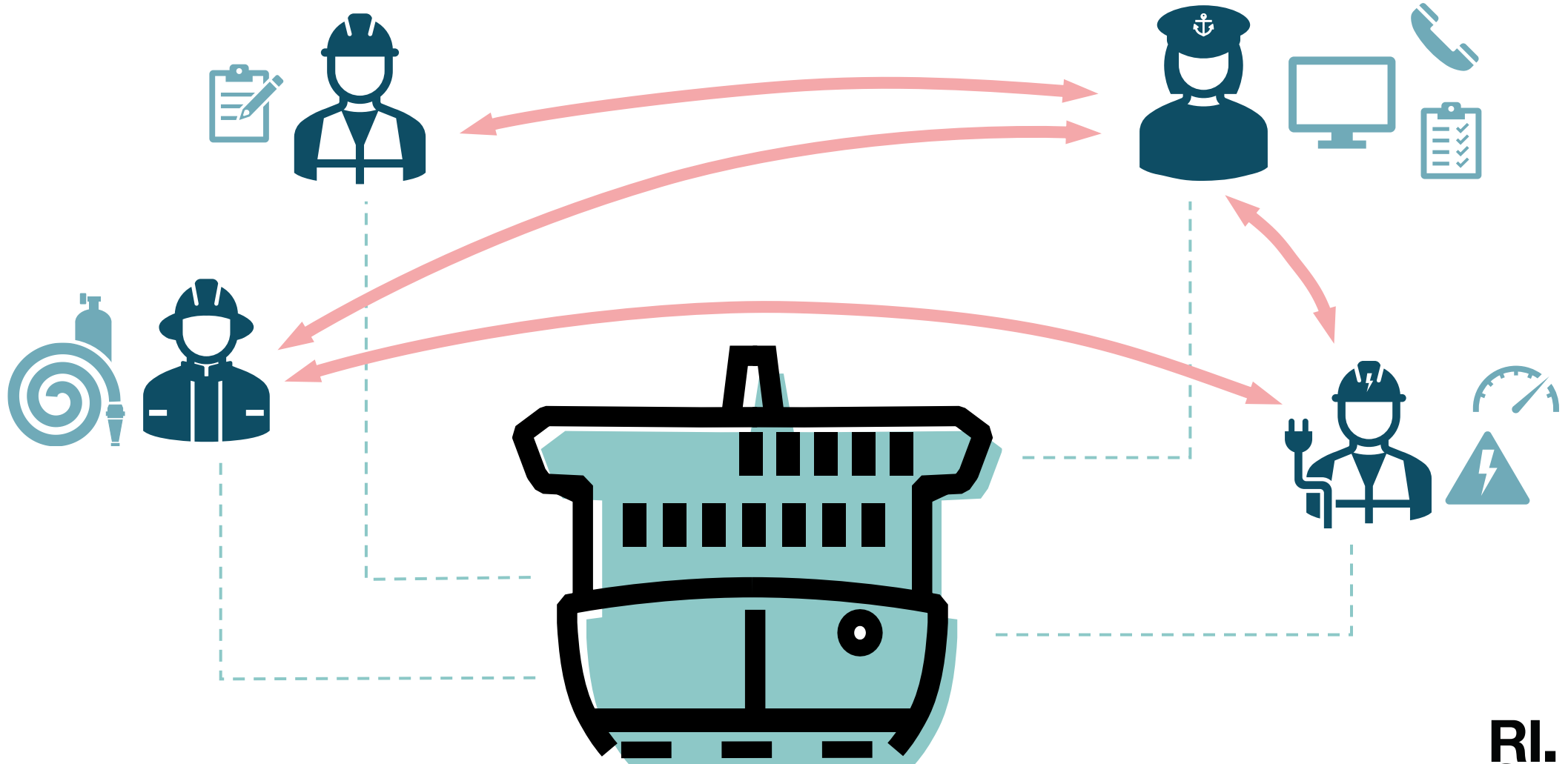
Does the job

Functional, effective, fit for purpose

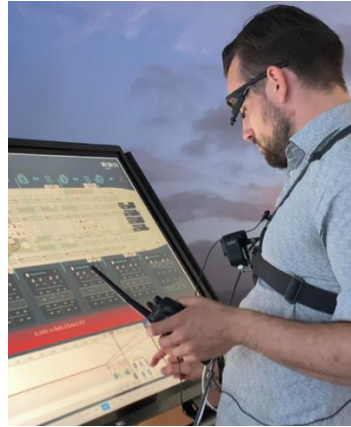
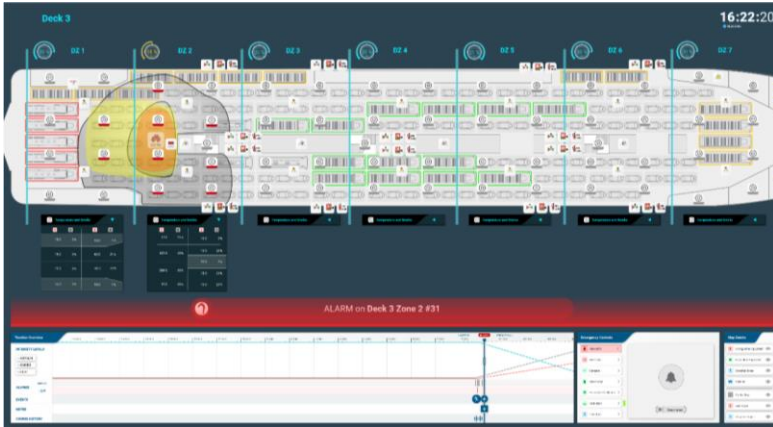
Makes the job doable

Supports crew activities in fire prevention & response

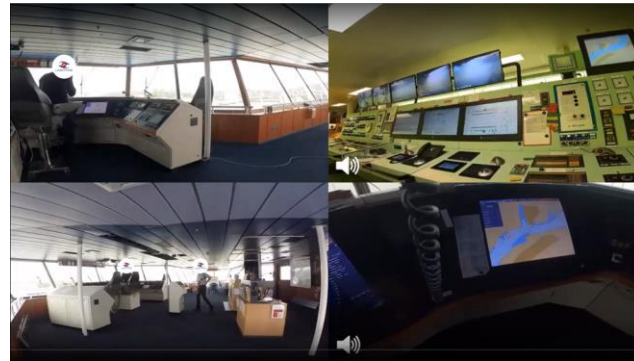
Interaction in fire safety operations



Digital Fire Central



- Extensive fieldwork
- 4 design iterations
- Tested and demonstrated with personnel from partner operators

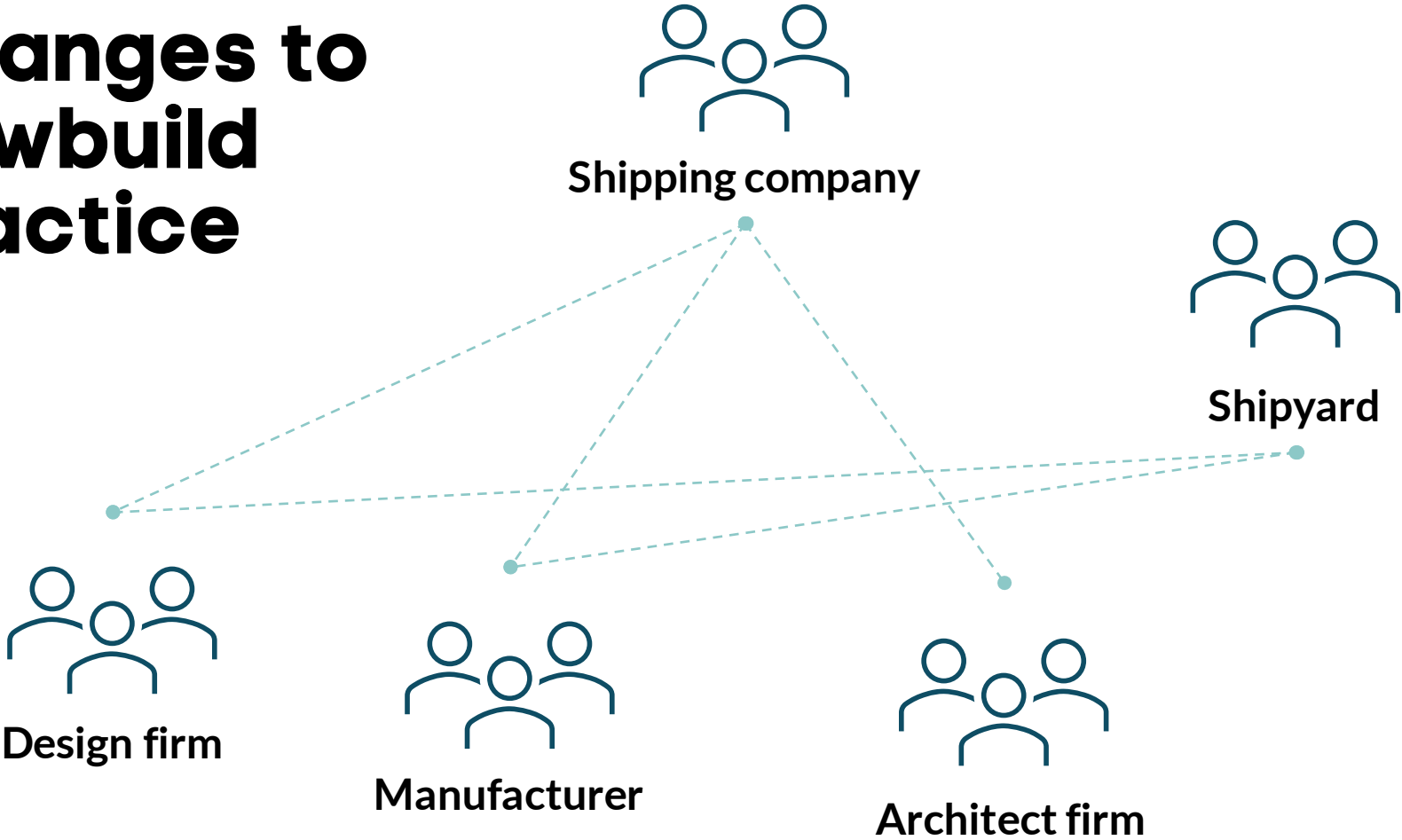


 **NTNU**
Norwegian University of
Science and Technology

**RI
SE**

**RI
SE**

Changes to newbuild practice



Design guidance requirements



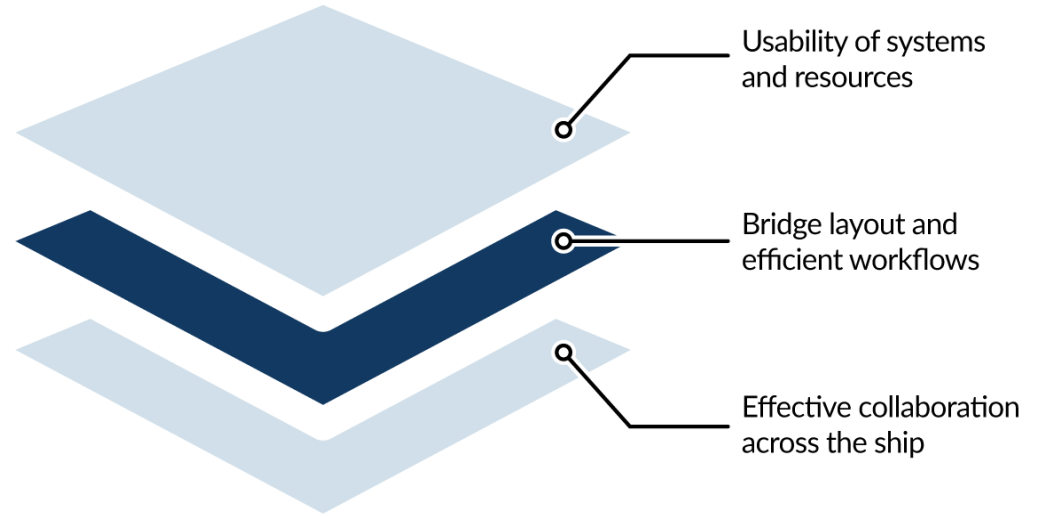
Low application threshold

Early phase integration

Activity-centered

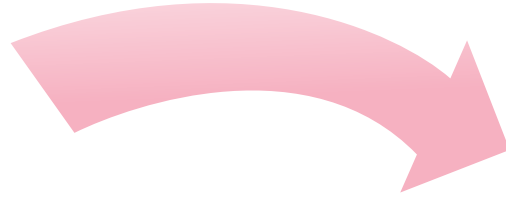
Solution-neutral

Empower operations





Investigate
crew
activities &
experiences



Define
requirements,
using design
principles



Communicate
requirements
internally &
externally



Review design
drafts &
specification



Wrap-up



Thank you

Staffan Bram

Staffan.bram@ri.se



Scan this code to download the
*Guidelines for crew-centered fire
safety design!*